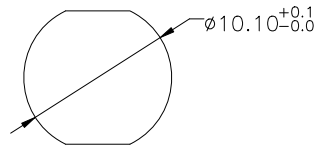
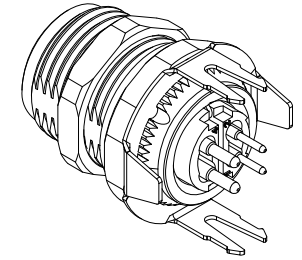
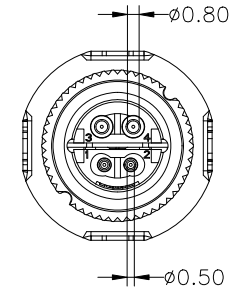
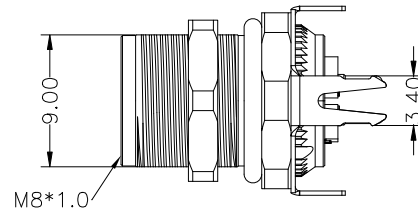
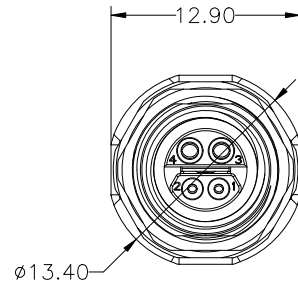


REV	DESCRIPTION	DATE	APPROVED
S0	CREATED DRAWING	2024/11/30	ZHY

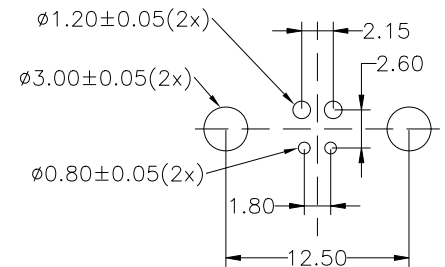
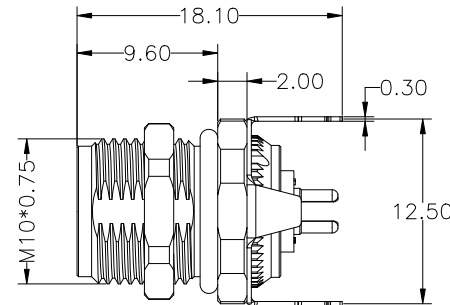


RECOMMENDED PANEL
CUTOUT SIZE



Electrical character

Rated voltage	60V/DC	
Rated current	4A	8A
Mechanical characteristics (mating cycle)	>100	
Degree of protection (ISO-20653,IEC60529)	IP67	
Operating temperature (depending on cable quality)	-25°C ~ +80°C	
Destructive withstand force between connector and overmold exceeds	**kgf	
Tightening torque (range)	0.4~1.8Nm	
Pollution degree	3	
ALL MATERIALS ARE RoHS COMPLIANT		



RECOMMENDED PCB
OPENING SIZE



Shenzhen Signal Electronics co.,Ltd

TITLE
SPE M8 HYBRID,2+2 POLE
FEMALE FACEPLATES

DRAWN BY	DATE	SGN NO	080004-04-001	REV.	
CHECKED BY	DATE	DWG NO			
CHECKED BY	DATE	CUSTOMER		SO	
APPROVED BY	DATE	TOLERANCES ARE:	THIRD ANGLE PROJECTION		
<small>THE INFORMATION CONTAINED IN THIS DRAWING IS THE SOLE PROPERTY OF SIGNAL COMPANY. ANY REPRODUCTION IN PART OR WHOLE WITHOUT THE WRITTEN PERMISSION OF SIGNAL COMPANY IS PROHIBITED.</small>		DECIMALES	.x ±0.50	ANGLES	x.* ±2.0°
		UNITS	.xx ±0.20	SCALE:	1:1
		UNITS:	mm	SHEET:	1 OF 1

ITEM	PART NO.	SPECIFICATION	Q'TY	UNIT
④	GL00002	BLACK EPOXY RESIN -50°C~+130°C	2	g
③	N/A	SOCKET LOCATOR	1	PCS
②	N/A	SPE M8 BRASS FRONT LOCKING PANEL MALE HOUSING ASSEMBLY	1	SET
①	N/A	SPE M8 CODING 2+2PIN FEMALE CONNECTOR	1	SET